

IN THIS ISSUE

<u>From the Director</u>	<u>1</u>
<u>Spring Festival of Flowers</u>	<u>3</u>
<u>New Students</u>	<u>4</u>
<u>New Grants & Publications</u>	<u>5</u>
<u>There's an App for That</u>	<u>7</u>
<u>Peanut Butter Challenge</u>	<u>7</u>
<u>Faculty Awards</u>	<u>8</u>
<u>Extension Farm Field Day</u>	<u>9</u>
<u>Farm to City</u>	<u>10</u>
<u>New Grad Students</u>	<u>11</u>
<u>Fall Plant Sale</u>	<u>12</u>
<u>Student Awards</u>	<u>13</u>
<u>2 + 2 Scholarships</u>	<u>14</u>
<u>Calendar of Events & Holidays</u>	<u>15</u>

Visit us online at

wfrec.ifas.ufl.edu

Find us on Facebook

[University of Florida,
at Milton](#)

[University of Florida -
Jay Research Facility](#)

From the Center Director

We're in my favorite season of the year – Fall - except that it's Fall in name only. This month has been the hottest and driest September on record. i.e., summer continues. Temperatures in the nineties and no chance of rain bake our crops. Current weather patterns will likely result in yield losses for peanut and cotton as little of our area is under irrigation. Peanuts are now being harvested and in many cases on heavier soils digging is difficult owing to hard ground conditions that defy entry of peanut diggers into the soil. If it's not one extreme it's another – last year's harvest season was so wet that many area producers lost all or part of their peanut and cotton crops. A moderate amount of rain would be welcome right now, but we don't want a repeat of Fall 2018. I wish all our area producers the best during this harvest season.



Dr. Wes Wood
Professor & Center Director

On 22 August, we had the best Extension Farm Field Day since I joined the WFREC in 2014. The presentations were excellent, and we had an overflow crowd in attendance – looks like we need to get an additional trolley to handle the numbers of folks making the field tour. I appreciate the sponsors that supported the breakfast, BBQ meal and other aspects of the field day. I also thank the presenters, many of whom traveled many miles to share their expertise with our producers. Another good one in the books.

On the teaching front, our numbers continue to grow – the number of undergraduate and graduate students has doubled over the past five years at the WFREC. I attribute this growth to our great teaching professors and to the success of our student recruiter. Continued growth of our teaching program will require additional personnel and infrastructure.

On 15 and 16 August, the WFREC faculty retreated to the quietness of cabins and a meeting room on the Coldwater Creek to develop a five-year strategic plan going forward from 2020. Enconced in that location with no cell service we made significant progress on future plans for the WFREC. We also made revisions to the WFREC bylaws. I'm currently working on the documents that will be implemented by the new year.

I'm looking forward to one of our premier events that occurs during Thanksgiving week – our Farm to City harvest and food distribution. On the Monday of that week we introduce high school students to our research farm as they assist in harvesting and packaging produce grown by us and local farmers. On Tuesday we distribute that produce and other foodstuffs collected by Feeding the Gulf Coast personnel to 800 needy families in Santa Rosa and Escambia Counties. Farm to City is one of the best things we do each year and I'm proud of the effort our folks make to ensure it's a success.



Continued on page 2

IN THIS ISSUE

From the Director	1
Spring Festival of Flowers	3
New Students	4
New Grants & Publications	5
There's an App for That	7
Peanut Butter Challenge	7
Faculty Awards	8
Extension Farm Field Day	9
Farm to City	10
New Grad Students	11
Fall Plant Sale	12
Student Awards	13
2 + 2 Scholarships	14
Calendar of Events & Holidays	15

Visit us online at

wfrec.ifas.ufl.edu

Find us on Facebook

[University of Florida,
at Milton](#)

[University of Florida -
Jay Research Facility](#)

From the Center Director

Continued from page 1

Lastly, did you know that UF is a top 10 public university according to *U.S. News and World Report*? In fact, we've been in the top 10 for the past three years, we're now ranked number seven, and we're striving to be ranked in the top five. You might ask, so what and who cares? There are many reasons to care including: 1) for our students, attending a top-10 public university means their degrees will be worth more when they graduate; 2) for our alumni, the degrees they already hold are now more valuable, 3) for the university, it means we will be able to recruit and attract even more of the best and brightest students and faculty, 4) for the state of Florida, it means our sons and daughters no longer have to leave their home state to attend a world-class university and, 5) for Florida's economy, having a top-10 public research university is an effective tool for recruiting top companies and employers. For me personally, it's great to be associated with a first-class operation and I hope all WFREC personnel, our students and our supporters feel the same way.

Go Gators!



IN THIS ISSUE

From the Director	1
Spring Festival of Flowers	3
New Students	4
New Grants & Publications	5
There's an App for That	7
Peanut Butter Challenge	7
Faculty Awards	8
Extension Farm Field Day	9
Farm to City	10
New Grad Students	11
Fall Plant Sale	12
Student Awards	13
2 + 2 Scholarships	14
Calendar of Events & Holidays	15

Visit us online at

wfrec.ifas.ufl.edu

Find us on Facebook

**University of Florida,
at Milton**

**University of Florida -
Jay Research Facility**

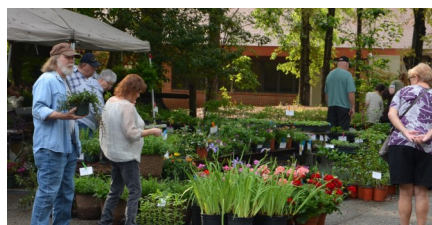
2020 Spring Festival of Flowers



The University of Florida, IFAS and the Pensacola State College Milton Campus invite you to join them April 3, 4, & 5, 2020 for one of the largest festivals of the season. This is a popular event that draws plant enthusiasts from near and far. This festival features plant nurseries, the UF Student Club plant sale, arts & crafts, great food, and educational opportunities. The goal of the event is to raise money for scholarships, student educational field trips, and other student needs.

We are seeking vendors!

Each vendor booth space is \$100 for all three days of the festival (Fri, Sat, & Sun). There is no charge for non-profit agencies. If you are interested please contact Robin Vickers at rvickers@ufl.edu or 850-393-7334.



**April 3, 4, & 5, 2020
UF/PSC Milton Campus**



IN THIS ISSUE

From the Director	1
Spring Festival of Flowers	3
New Students	4
New Grants & Publications	5
There's an App for That	7
Peanut Butter Challenge	7
Faculty Awards	8
Extension Farm Field Day	9
Farm to City	10
New Grad Students	11
Fall Plant Sale	12
Student Awards	13
2 + 2 Scholarships	14
Calendar of Events & Holidays	15

Visit us online at

wfrec.ifas.ufl.edu

Find us on Facebook

**University of Florida,
at Milton**

**University of Florida -
Jay Research Facility**

Welcome to Our New Students!

UF/IFAS West Florida Research & Education Center in Milton, Florida would like to welcome all of our incoming students for the 2019-2020 academic year.

Natural Resource Conservation



From left to right—front row: Helen Yates, Donita Lewis, Leah Vickery, Ashley Gamble, Madelyn Godwin, Kaitie Sainata, Makayla Emerson, Kolby Sprague, Devon Waters, Kayla Storr, Dr. Debbie Miller. Back Row: Dakota Barlow, Eric Brubaker, Nick Fish, Brandon Fish, Mary Easterday, Caitlin Crocker, Matthew Wachob, Trevor Bostwick, Evan Mosley, Zachary Rutherford.

Plant Science



From left to right: Emily Webb, Nathan Titzman, Joshua Criss, Mike Gillette, Gabe Hantz, Hayden Shellenbarger, Dr. Mack Thetford.

IN THIS ISSUE

From the Director	1
Spring Festival of Flowers	3
New Students	4
New Grants & Publications	5
There's an App for That	7
Peanut Butter Challenge	7
Faculty Awards	8
Extension Farm Field Day	9
Farm to City	10
New Grad Students	11
Fall Plant Sale	12
Student Awards	13
2 + 2 Scholarships	14
Calendar of Events & Holidays	15

Visit us online at

wfrec.ifas.ufl.edu

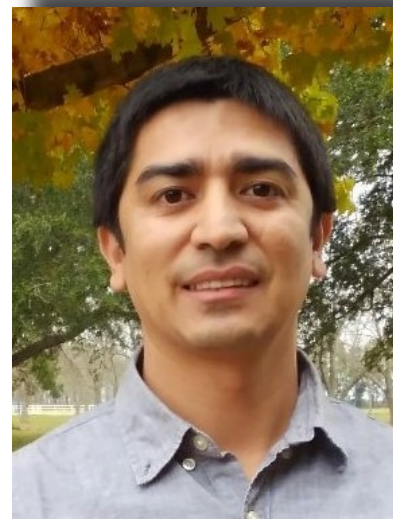
Find us on Facebook

[University of Florida,
at Milton](#)

[University of Florida -
Jay Research Facility](#)

New Grants & Publications

Dr. Pratap Devkota
Assistant Professor, Weed Science



EXTENSION PUBLICATIONS:

- M. Durham, P. Devkota, J. Ferrell, and B. Sellers (2019) Spiderwort control in hay fields and pastures. UF/IFAS Electronic Delivery Information System (EDIS) publication SS-AGR-404. University of Florida, Gainesville, FL. [Link](#)
- B. Sellers, **P. Devkota**, J. Ferrell (2019) Fireweed (heartleaf nettle) control in pastures. UF/IFAS Electronic Delivery Information System (EDIS) publication SS-AGR-41. University of Florida, Gainesville, FL. [Link](#)
- B. Sellers, **P. Devkota**, J. Ferrell (2019) Thistle control in pastures. UF/IFAS Electronic Delivery Information System (EDIS) publication SS-AGR-95. University of Florida, Gainesville, FL. [Link](#)

Dr. Mike Mulvaney
Assistant Professor, Agronomy



Peer-reviewed publications

- H.K. Abbas, M.W. Ebelhar, N. Bellaloui, **M.J. Mulvaney**, G. Stoner, J. Kotowicz, N. Little, C. Accinelli, W.T. Shier. 2019. Contamination of sesame seed grown in Mississippi with aflatoxin, fumonisin, and mycotoxin-producing fungi. World Mycotoxin Journal 12(2): 123-132. doi:10.3920/WMJ2018.2388.

Extension publications

- M. Bashyal, **M. Mulvaney**, E.Z. Bean. 2019. Design and Construction of a Constant Head Infiltrometer. UF/IFAS Electronic Delivery Information System (EDIS) publication SS-AGR-433. University of Florida, Gainesville, FL. [Link](#)
- A. Jani, **M. Mulvaney**. 2019. Nitrogen contributions from peanut residues to subsequent crops. UF/IFAS Electronic Delivery Information System (EDIS) publication SS-AGR-432. University of Florida, Gainesville, FL. [Link](#)

Continued on page 4

IN THIS ISSUE

From the Director	1
Spring Festival of Flowers	3
New Students	4
New Grants & Publications	5
There's an App for That	7
Peanut Butter Challenge	7
Faculty Awards	8
Extension Farm Field Day	9
Farm to City	10
New Grad Students	11
Fall Plant Sale	12
Student Awards	13
2 + 2 Scholarships	14
Calendar of Events & Holidays	15

Visit us online at

wfrec.ifas.ufl.edu

Find us on Facebook

**University of Florida,
at Milton**

**University of Florida -
Jay Research Facility**

New Grants & Publications

Dr. Mike Mulvaney
Assistant Professor, Agronomy

Extension publications *continued*

- **M. Mulvaney**, C. Mackowiak, D. Wright, B. Tillman, P. Minogue. 2019. Considerations before contracting for chipped or shredded wood debris application on agricultural land. Panhandle Ag News, Mar. 1, 2019. UF/IFAS Extension, University of Florida. [Link](#)

Abstracts

1. **M.J. Mulvaney**, L. Johnson. 2019. Cover crops: A poor man's irrigation? Southern Cover Crop Conference. July 16-17, 2019, Auburn, AL.
2. **M.J. Mulvaney**, K.S. Balkcom, D. Jordan, A.D. Jani (G). 2019. Nitrogen credits after peanut. American Peanut Research and Education Society. July 9-11, 2019, Auburn, AL.
3. J. Iboyi, **M.J. Mulvaney**. Establishment and development of best agronomic practices to maximize yield potential of Brassica carinata in the Southeastern United States: Cropping Systems Research Plan at the WFREC. 6th Annual Carinata Biomaterials Summit. March 5-6, 2019, Quincy, FL.
4. M. Bashyal, **M.J. Mulvaney**. Carinata growth and yield response to nitrogen levels. March 5-6, 2019, Quincy, FL.
5. R. Leon, P. Devkota, **M.J. Mulvaney**. Updates on weed management in carinata. 6th Annual Carinata Biomaterials Summit. March 5-6, 2019, Quincy, FL.
6. K.J. Boote, R. Seepaul, **M.J. Mulvaney**, A. Hagan. Adapting the CROPGRO model to simulate growth and yield of carinata. 6th Annual Carinata Biomaterials Summit. March 5-6, 2019, Quincy, FL.

Grants

1. \$10,000,000. A cover crop network for enhancing the sustainability of US cropping systems. USDA NIFA Sustainable Agricultural Systems Award. 2019-2024.
2. \$49,494. Precision agriculture infrastructure for variable rate fertilization, planting, spraying, and yield monitoring of row crops. UF/IFAS Infrastructure Award. 2019.



IN THIS ISSUE

From the Director	1
Spring Festival of Flowers	3
New Students	4
New Grants & Publications	5
There's an App for That	7
Peanut Butter Challenge	7
Faculty Awards	8
Extension Farm Field Day	9
Farm to City	10
New Grad Students	11
Fall Plant Sale	12
Student Awards	13
2 + 2 Scholarships	14
Calendar of Events & Holidays	15

Visit us online at

wfrec.ifas.ufl.edu

Find us on Facebook

[University of Florida,
at Milton](#)

[University of Florida -
Jay Research Facility](#)

There's An App For That!



Pictured left to right: Ph.D. student Marcelo Rabelo, Dr. Paula-Moraes, Mr. Diamond, Mr. Davis, Extension Agent Libbie Johnson, Mr. Thomas, Mr. Walker, and Extension Agent John Atkins.

Dr. Silvana Paula-Moraes met with a group of Santa Rosa county Extension agents and producers to present and get feedback on the first version of an app that has been developed in collaboration with Dr. Fraisse's UF AgroClimate team. The Cotton Pests in Florida app will allow local farmers and producers to identify pests associated with cotton in the panhandle region of Florida as well as find information on strategies for managing each pest. This app is

one of the objectives listed in the sub-project 2017 NIFA CPPM EIP GMO cotton in Florida. The meeting was held at the West Florida Research & Education Center in Jay, FL on August 30th.



Meet the Challenge: Peanut Butter for Food Pantries

The annual Peanut Butter Challenge, coordinated by the UF/IFAS Extension offices, will run from October 1st through November 27th. The Peanut Butter Challenge not only raises awareness about the important contribution of North Florida's peanut growers to the state peanut industry, but also helps provide a healthy, locally produced product to food-insecure families in northwest Florida.

"Last year, UF/IFAS Extension Santa Rosa collected 751 jars of peanut butter (1,131 pounds) and all of it went to local food programs that serve our county residents. Help us beat those numbers and collect a ton of peanut butter this year!" said Chris Verlinde, Sea Grant Agent for UF/IFAS Extension.

Unopened jars of peanut butter can be dropped off at:

- UF/IFAS Santa Rosa County Extension Office at 6263 Dogwood Dr in Milton—open 8am to 4:30pm Mon through Fri
- Any Santa Rosa County Library—Milton, Pace, Jay, Navarre & Gulf Breeze

Get your favorite group, church, school, office or other organization involved for a greater impact!

For inquiries, please contact Mary Salinas at maryd@santarosa.fl.gov, 850-623-3868, or Chris Verlinde at christinav@santarosa.fl.gov, 850-623-3868.

IN THIS ISSUE

From the Director	1
Spring Festival of Flowers	3
New Students	4
New Grants & Publications	5
There's an App for That	7
Peanut Butter Challenge	7
Faculty Awards	8
Extension Farm Field Day	9
Farm to City	10
New Grad Students	11
Fall Plant Sale	12
Student Awards	13
2 + 2 Scholarships	14
Calendar of Events & Holidays	15

Visit us online at

wfrec.ifas.ufl.edu

Find us on Facebook

[University of Florida,
at Milton](#)

[University of Florida -
Jay Research Facility](#)

Faculty Awards

We are pleased to congratulate the following faculty who have received awards this quarter.



Dr. Debbie Miller
Professor, Wildlife Ecology
and Conservation

Dr. Debbie Miller was selected to receive a University Team Professorship award. These three year professorships are given to recognize and reward faculty achievements.



Dr. Mike Mulvaney
Assistant Professor, Agronomy

Dr. Mike Mulvaney received the Agronomy Young Investigator Award, Agronomy Editorial Board, MDPI Publishing, Basel Switzerland, 2019. He has also been nominated by the American Peanut Research and Education Society for the 2019 Bailey Award.



Dr. Ajay Sharma
Assistant Professor, Forest Resource
and Conservation

Dr. Ajay Sharma was presented the 2018-2019 Innovation in Teaching Award by the University of Florida IFAS College of Agricultural and Life Sciences.

EXTENSION

FARM FIELD DAY

IN THIS ISSUE

<u>From the Director</u>	<u>1</u>
<u>Spring Festival of Flowers</u>	<u>3</u>
<u>New Students</u>	<u>4</u>
<u>New Grants & Publications</u>	<u>5</u>
<u>There's an App for That</u>	<u>7</u>
<u>Peanut Butter Challenge</u>	<u>7</u>
<u>Faculty Awards</u>	<u>8</u>
<u>Extension Farm Field Day</u>	<u>9</u>
<u>Farm to City</u>	<u>10</u>
<u>New Grad Students</u>	<u>11</u>
<u>Fall Plant Sale</u>	<u>12</u>
<u>Student Awards</u>	<u>13</u>
<u>2 + 2 Scholarships</u>	<u>14</u>
<u>Calendar of Events & Holidays</u>	<u>15</u>

On Thursday, August 22, 2019 from 8 am until noon, the University of Florida IFAS Extension and the West Florida Research and Education Center hosted the Extension Farm Field Day. The purpose of this meeting is to help growers understand some of the positive impacts, as well as the challenges of modifying agricultural practices to make row crop production more diverse and efficient. We discussed some of the benefits and limitation of current production practices and of agricultural technologies that might be used in the near future in the panhandle.

Field day topics included: Weed Control in Peanut, Snails in Row Crops: What You Need to Know, Soybean Crop Protection Tips, Cotton Target Spot Management and Update on Cotton Leaf Roll Dwarf Virus (CLRDV) in Florida, Cotton Varieties, Managing Peanut Varieties to Minimize Disease Risk and Maximize Agronomic Performance, Peanut Fungicides and Disease Management, Nematode Management in Row Crops, and Cover Crop Effects on Cotton.

Thank you to our generous sponsors for providing a barbeque lunch to all attendees. BASF, Bayer Crop Science, Coastal Machinery (provided breakfast), Nutrien Ag Solutions, Corteva Agriscience & PhytoGen, Farm Credit of NWFL, Helena, Jay Farmers Co-op, Monsanto, Nichino, Smith Tractor, Syngenta, United Bank, Trellis Soil Moisture Sensor System, Jenkins Precision Products, Escambia River Electric Co-op, Vantage South, Florida Peanut Producers, Americot/NexGen, PHD Realty LLC, Brown's Bookkeeping & Payroll Services, and Santa Rosa County Farm Bureau.



Visit us online at

wfrec.ifas.ufl.edu

Find us on Facebook

**University of Florida,
at Milton**

**University of Florida -
Jay Research Facility**

UF | IFAS Extension
UNIVERSITY of FLORIDA

IN THIS ISSUE

From the Director	1
Spring Festival of Flowers	3
New Students	4
New Grants & Publications	5
There's an App for That	7
Peanut Butter Challenge	7
Faculty Awards	8
Extension Farm Field Day	9
Farm to City	10
New Grad Students	11
Fall Plant Sale	12
Student Awards	13
2 + 2 Scholarships	14
Calendar of Events & Holidays	15

Visit us online at

wfrec.ifas.ufl.edu

Find us on Facebook

[University of Florida,
at Milton](#)

[University of Florida -
Jay Research Facility](#)

Call For Sponsors & Volunteers

Farm to City Food Distribution

The University of Florida - West Florida Research and Education Center, Feeding the Gulf Coast, and Waterfront Rescue Mission will join forces to celebrate National Farm to City Week November 22-28, 2019. Farm to City Week is a time to recognize and celebrate the importance of relationships between farmers, consumers, community leaders and everyone in between who contributes to our safe, abundant food supply. We know that you support agriculture and we are asking for your support of our local efforts to promote agriculture during the Farm to City Week.

To promote agriculture and increase awareness about the importance of agriculture to consumers and the general public, we will distribute food (some locally grown) to 400 pre-qualified families in need in Santa Rosa County and 400 pre-qualified families in need in Escambia County. This food will provide these families with a healthy meal this Thanksgiving holiday.

On November 26th Feeding the Gulf Coast will provide holiday meal boxes that provide each family with a turkey or ham and all the fixings for a Thanksgiving meal. The University of Florida – WFREC, and Florida Farm Bureau will provide locally grown vegetables, local stone ground grits and cornmeal for these families. Santa Rosa and Escambia County Extension Services will be there to demonstrate how to prepare and cook the produce as well as hand out recipe cards. We want to feed these families and teach folks in our community about the economic, environmental, and societal benefits of agriculture.

The locally grown produce (collards, cabbage and sweet potatoes) will be harvested at the University of Florida, WFREC one day prior to distribution of the holiday meal boxes by local Agriculture students from Santa Rosa and Escambia County.

Volunteer & Sponsor Opportunities

We would like you to consider supporting this much needed community outreach project that will greatly benefit over 3,200 individuals in Santa Rosa and Escambia County. Please make check payable to the [University of Florida](#) and mail to 5988 Hwy 90, Bldg. 4900, Milton, FL 32583 or pay by credit card by calling 850-983-7134. If you have any question or need additional information, please feel free to contact Robin Vickers at rvickers@ufl.edu.

Check out the [Farm to City Video](#)



IN THIS ISSUE

From the Director	1
Spring Festival of Flowers	3
New Students	4
New Grants & Publications	5
There's an App for That	7
Peanut Butter Challenge	7
Faculty Awards	8
Extension Farm Field Day	9
Farm to City	10
New Grad Students	11
Fall Plant Sale	12
Student Awards	13
2 + 2 Scholarships	14
Calendar of Events & Holidays	15

Visit us online at

wfrec.ifas.ufl.edu

Find us on Facebook

**University of Florida,
at Milton**

**University of Florida -
Jay Research Facility**

Welcome New Graduate Students



Izailda Barbosa dos Santos
PhD Entomology

In August we welcomed Iza as a new Ph.D. student at the West Florida Research and Education Center. She has just completed her masters in Plant Pathology at Auburn University in Auburn, Alabama and is now working on her PhD in Entomology. She will be working with [Dr. Silvana Paula-Moraes](#).



Benju completed her undergraduate degree in Forestry Science from Tribhuvan University, Nepal. Her research interests revolve around forest ecology, silviculture and climate change. For her thesis work, she will focus on longleaf pine ecosystem and its interaction with prescribed burning in restoration of groundcover diversity. She will be working with Dr. Ajay Sharma. Apart from nature and forests, Benju enjoys reading and poetry.

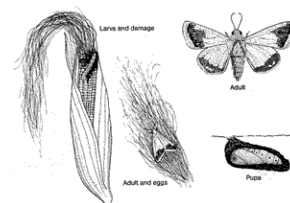


Benju Baniya,
MS Forest Resources
and Conservation



Claudia Justus,
PhD Entomology

Claudia is a Phd student and a self funded visiting researcher. She is here at the UF West Florida REC for four months to train in Integrated Pest Management of caterpillars associated with row crops.



IN THIS ISSUE

From the Director	1
Spring Festival of Flowers	3
New Students	4
New Grants & Publications	5
There's an App for That	7
Peanut Butter Challenge	7
Faculty Awards	8
Extension Farm Field Day	9
Farm to City	10
New Grad Students	11
Fall Plant Sale	12
Student Awards	13
2 + 2 Scholarships	14
Calendar of Events & Holidays	15

Visit us online at

wfrec.ifas.ufl.edu

Find us on Facebook

[University of Florida,
at Milton](#)

[University of Florida -
Jay Research Facility](#)

Welcome New Graduate Students



Sairandhri Lapalikar, PhD Forest
Resources and Conservation



Cody is interested in studying the forest dynamics of longleaf pine ecosystems. For his thesis, he will be working with Dr. Ajay Sharma, studying how windstorms (hurricanes) affect forest structure and community. Cody hopes to provide information that will be useful in conserving and maintaining an important habitat that has been severely impacted by agriculture and urban development.



Cody Pope,
MS Forest Resources
and Conservation

University of Florida Milton Student Club Fall Plant Sale

In preparation for the 2020 Spring Festival of Flowers plant sale, the UF Student Club will be having a Fall Plant Sale on November 2nd at the shade house behind UF Milton greenhouses. This event is in conjunction with the Santa Rosa County Extension and the Panhandle Butterfly House. The Master Gardeners will present an educational program at 10 am. The proceeds from the UF Student Club plant sale are used to support scholarship funds and educational activities.

Date: November 2nd

Time: 9:00 am to 1:00 pm

The UF Milton Greenhouses are located on the UF/PSC Milton Campus at 5988 Hwy 90 Milton, FL 32583.

IN THIS ISSUE

From the Director	1
Spring Festival of Flowers	3
New Students	4
New Grants & Publications	5
There's an App for That	7
Peanut Butter Challenge	7
Faculty Awards	8
Extension Farm Field Day	9
Farm to City	10
New Grad Students	11
Fall Plant Sale	12
Student Awards	13
2 + 2 Scholarships	14
Calendar of Events & Holidays	15

Visit us online at

wfrec.ifas.ufl.edu

Find us on Facebook

[University of Florida,
at Milton](#)

[University of Florida -
Jay Research Facility](#)

Student Scholarships & Awards



Agustin Boeri was selected to receive the Florida Turfgrass Association's 2019 Col. Frank Ward Memorial Scholarship. He was awarded the scholarship due to his excellent work history and focused career goals that will make him an asset to the turfgrass industry.

Way to go Agustin!

Gabriel Campbell was awarded a scholarship for the 2019-2020 academic year from the College of Agricultural and Life Sciences William C. & Bertha M. Cornett Fellowship. Donor(s): Dr. Elaine Turner, Dean.

Congratulations Gabriel!



Madelyn Godwin, a Natural Resource Conservation student, was awarded a scholarship from the Florida Federation of Garden Clubs for the 2019-2020 scholastic year.

Well Done Madelyn!



The Valparaiso Garden Club and the Greater Fort Walton Beach Camilla Society selected Zachary Rutherford to receive a scholarship for the 2019-2020 academic year. Zachary is studying Natural Resource Conservation and hopes to work with local producers and farmers in the row crop industry.

Congratulations Zachary!

IN THIS ISSUE

From the Director	1
Spring Festival of Flowers	3
New Students	4
New Grants & Publications	5
There's an App for That	7
Peanut Butter Challenge	7
Faculty Awards	8
Extension Farm Field Day	9
Farm to City	10
New Grad Students	11
Fall Plant Sale	12
Student Awards	13
2 + 2 Scholarships	14
Calendar of Events & Holidays	15

What is the 2+2 Scholarship?

The University of Florida and Pensacola State College have partnered to offer a scholarship package that assists students who wish to pursue a degree at the University of Florida at Milton. With this scholarship, students complete their Associate of Arts degree at Pensacola State College and then finish at the University of Florida in Milton with a Bachelor of Science degree.

Every year, two high school seniors are awarded a 2+2 scholarship. While at Pensacola State College, it covers the full cost of tuition. Once students have completed the prerequisite courses of their chosen major and gained admission to the University of Florida, they receive \$1000 per academic year.



Degree Programs

- ❖ Natural Resource Conservation
- ❖ Plant Science



How to Apply

1. Complete an Admissions Application with Pensacola State College
2. Write a 200-word statement outlining why you should be considered for the scholarship
3. Have a minimum grade point average of 3.0 on a 4.0 scale
4. Submit the application and statement in January to the University of Florida @ Milton

University of Florida
Milton
(850) 983-7138
UFmilton.com

Find us on Facebook at
Facebook.com/UFMilton

Visit us online at

wfrec.ifas.ufl.edu

Find us on Facebook

[University of Florida,
at Milton](#)

[University of Florida -
Jay Research Facility](#)



IN THIS ISSUE

From the Director	1
Spring Festival of Flowers	3
New Students	4
New Grants & Publications	5
There's an App for That	7
Peanut Butter Challenge	7
Faculty Awards	8
Extension Farm Field Day	9
Farm to City	10
New Grad Students	11
Fall Plant Sale	12
Student Awards	13
2 + 2 Scholarships	14
Calendar of Events & Holidays	15

Visit us online at

wfrec.ifas.ufl.edu

Find us on Facebook

**University of Florida,
at Milton**

**University of Florida -
Jay Research Facility**

2019 Upcoming Events

Santa Rosa Leadership Agribusiness Day	October 17, 2019
Santa Rosa County Farm Tour	October 22, 2019
UF Student Club Fall Plant Sale	November 2, 2019
Mondays In The Garden	November 4, 2019
Farm to City Initiative	November 25 & 26, 2019
PSC Experience—A Starry Starry Night	December 3rd, 2019

UF/WFREC Holidays & Academic Program Calendar

Veteran's Day (Closed) - November 11th

Thanksgiving (Closed) - November 28th & 29th

Christmas Day (Closed) - December 25th

Milton & Jay (Closed) - December 26th—January 1st

