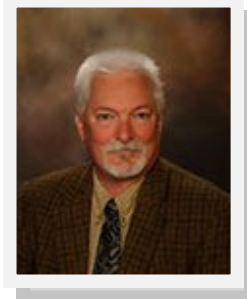


IN THIS ISSUE

<u>From the Director</u>	1
<u>Employee Happenings</u>	3
<u>NRC Student Named CALS Ambassador</u>	3
<u>WFREC Employee Receives Scholarship</u>	4
<u>New Grants and Publications</u>	5
<u>2015 New Fall Students</u>	9
<u>New Graduate Student</u>	10
<u>Recruiter's Corner</u>	10
<u>Fall Harvest Dinner</u>	11
<u>Farm to City</u>	12

From the Center Director

Fall is officially here and it's my favorite time of year. The mornings are cool and the humidity is lower than during other seasons, which bodes well for harvest of our summer crops. Our harvests have been great so far owing to ample rain that fell on the Jay Research Facility this summer.



The summer of 2015 was a good quarter for the WFREC, especially with regard to expansion of our programs. The Florida legislature approved a \$5.5M work load increase request from IFAS with the money primarily being used to hire more than 40 new faculty members. The WFREC will get two of these positions: 1) a watershed management scientist with 70% research and 30% teaching responsibilities, and 2) an entomologist with 70% research and 30% teaching responsibilities. Both positions are currently advertised, and we expect to interview candidates over the next few months. These two new hires will increase our faculty numbers by 25%! The watershed management position will strengthen our natural resources teaching/research group, while the entomologist position will allow us to move towards implementation of an undergraduate crop ecology teaching program and enhance our agricultural research team. The WFREC will experience growing pains as we take on these new faculty members, but that's a good problem to have.

Our undergraduate recruiter, Sondra Forrester, has confirmed that she was a great hire through her efforts and success in bringing new students to our programs. Sixteen new students joined our programs this fall, which is huge for us. Sondra tells me she already has nine students lined up to start with us in spring semester 2016, and is working hard to increase that number. Keep up the good work Sondra!

We hosted several successful events during summer quarter. On 7 July we conducted the International Year of Soils Teach the Teacher Workshop at the Jay Research Facility. The purpose of this workshop was to help middle and high school science teachers incorporate soil science into their curriculums. This workshop was especially fun for me, as I got to return to my teaching roots for a day. Thanks go out to Libbie Johnson (Escambia County Agricultural Extension Agent) and Trent Matthews (Santa Rosa NRCS District Conservationist), without whom

(Continued on page 2)



Visit us online at
wfrec.ifas.ufl.edu
Find us on Facebook
**University of Florida -
Milton Campus**

**University of Florida -
Jay Research Facility**

IN THIS ISSUE

<u>From the Director</u>	1
<u>Employee Happenings</u>	3
<u>NRC Student Named CALS Ambassador</u>	3
<u>WFREC Employee Receives Scholarship</u>	4
<u>New Grants and Publications</u>	5
<u>2015 New Fall Students</u>	9
<u>New Graduate Student</u>	10
<u>Recruiter's Corner</u>	10
<u>Fall Harvest Dinner</u>	11
<u>Farm to City</u>	12

the workshop could not have been possible. On 24 July we held our Grain Corn Field Day where local producers learned about the best corn varieties and fertilization practices to implement on their farms. On 27 August, our Fall Extension Farm Field Day at the Jay Research Facility was a great success with over 100 farmers in attendance. Producers got the latest information on genetics and management of cotton, peanut, and soybean. They also learned about sesame, which may have potential in Florida Panhandle cropping systems. The Farm Bureau legislative tour made a stop that same day and got a tour of our grist mill operation and turfgrass research. They left us smiling and bearing bags of cornmeal. We thank our many sponsors that help make these field days a success.

Please keep in mind some upcoming events in the fall quarter that the WFREC is hosting or in which we are heavily involved. On 15 October we will host the Santa Rosa Leadership Agribusiness Tour where business folks and municipal/county leaders will learn about Panhandle agriculture at the Jay Research Facility. On 29 October the Santa Rosa County Farm Tour will stop by the Jay Research Facility for a couple of hours – this year's theme is cotton production. On Friday evening of 13 November we will have our second annual Fall Harvest Dinner, which will be an evening of great food, fellowship and entertainment – please join us! November 20-26 is Farm-to-City Week. On 23 November we will have our Farm-to-City Food Harvest where dozens of local high school students will help us harvest cabbage and collards grown at the Jay Research Facility for distribution to over 700 needy families in Santa Rosa and Escambia Counties on 24 November. This effort is led by Robin Vickers (WFREC Events Coordinator) in conjunction with the Bay Area Food Bank that supplies turkeys, canned goods and baked items in addition to the fresh produce we supply for distribution on 24 November. Our success as a major player in this annual event would not be possible without Robin's leadership, and the help she gets from our farm crew (Greg Kimmons, Justin Hudson and Chad Stewart), Randy Dozier (Department of Corrections Officer and vegetable horticulturalist extraordinaire) and his crew of inmates, and Billy Danielson (Corporate Sales/Marketing Manager at Smith Tractor Company). I'm extremely proud of our Farm-to-City involvement, and feel it embodies the University of Florida's "Gator Good" effort whose mission is about changing the world for the better.

I wish everyone a wonderful harvest season – may your hard work be rewarded. Again, help us celebrate the harvest by joining us on the evening of 13 November at the Jay Research Facility for our Harvest Dinner.

GO GATORS!



Visit us online at
wfrec.ifas.ufl.edu

Find us on Facebook
University of Florida -
Milton Campus

University of Florida -
Jay Research Facility

IN THIS ISSUE

[From the Director](#) 1

[Employee Happenings](#) 3

[NRC Student Named
CALS Ambassador](#) 3

[WFREC Employee
Receives Scholarship](#) 4

[New Grants and
Publications](#) 5

[2015 New Fall Students](#) 9

[New Graduate Student](#) 10

[Recruiter's Corner](#) 10

[Fall Harvest Dinner](#) 11

[Farm to City](#) 12



Visit us online at
wfrec.ifas.ufl.edu

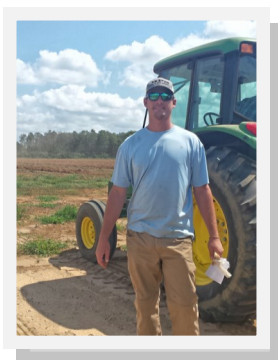
Find us on Facebook
University of Florida -
Milton Campus

University of Florida -
Jay Research Facility

New Employees Join UF/IFAS WFREC

Ian McLean joined WFREC August 17, 2015 as our new IT Practitioner. His previous job was with the University of West Florida where he was responsible for desk-side support for the staff in Admissions, Registrar, and Financial Aid. He was also responsible for document imaging and student record management.

He is currently enrolled at UWF working towards his Bachelor of Science in Information Technology with a focus on Networking and Telecommunications.



Hey, my name is Conner Weekes, and I am from Jay, Florida. I went to Jay High School and graduated with the class of 2012. I started working at the West Florida Research and Education Center in August, so I haven't been here very long and may not have had the pleasure of meeting quite everyone yet, but I do look forward to having the privilege to work with such a great faculty and staff.

I will be working for Dr. Mulvaney on the cropping systems team, doing research on disease and fertilization for various crops such as peanuts, cotton, corn, wheat, and soybeans.

Milton Student Selected as a 2015-2016 CALS Ambassador!

The CALS Ambassadors are a select group of students who have demonstrated outstanding achievement in academics and student leadership. Their objective is to create awareness of the academic programs and career opportunities in food, agriculture and natural resources among students, teachers, advisers and the general public. Ambassadors are seasoned speakers who regularly address diverse audiences throughout the state of Florida. We are so proud of our very own Natural Resource Conservation undergraduate, Jeremy Munn, and are lucky to have him representing both UF and the Milton campus.



Jeremy Munn

(Continued on page 4)

You may see him out serving in high schools, community colleges, alumni gatherings, college fairs and trade events.

Way to go Jeremy!



Recruiter Sondra Forrester and Jeremy Munn at local college fair

IN THIS ISSUE

[From the Director](#) 1

[Employee Happenings](#) 3

[NRC Student Named
CALs Ambassador](#) 3

[WFREC Employee
Receives Scholarship](#) 4

[New Grants and
Publications](#) 5

[2015 New Fall Students](#) 9

[New Graduate Student](#) 10

[Recruiter's Corner](#) 10

[Fall Harvest Dinner](#) 11

[Farm to City](#) 12



Visit us online at
wfrec.ifas.ufl.edu

Find us on Facebook
University of Florida -
Milton Campus

University of Florida -
Jay Research Facility

Congratulations Cody!

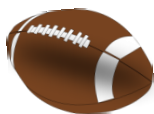
WFREC / Jay Research Facility's Senior Lab Technician for Cropping Systems, Cody English, received the Sidney B. Meadows Scholarship on July 15th. He was one of only twelve students from five Southeastern universities to receive this honor.

Cody is continuing to work towards his Bachelor of Science degree in Plant Science at the University of Florida Milton campus.

We're proud of you Cody!



Want to check out some Gator football? Please click [here](#) to view the 2015 Florida Gator football schedule.



Go Gators!

IN THIS ISSUE

<u>From the Director</u>	1
<u>Employee Happenings</u>	3
<u>NRC Student Named CALS Ambassador</u>	3
<u>WFREC Employee Receives Scholarship</u>	4
<u>New Grants and Publications</u>	5
<u>2015 New Fall Students</u>	9
<u>New Graduate Student</u>	10
<u>Recruiter's Corner</u>	10
<u>Fall Harvest Dinner</u>	11
<u>Farm to City</u>	12



Visit us online at
wfrec.ifas.ufl.edu

Find us on Facebook
University of Florida
Milton Campus

University of Florida -
Jay Research Facility

New Grants and Publications



Dr. J. Bryan Unruh

Grants:

Unruh, J. B. and T. W. Shaddox**. Florida Golf Course Superintendents Association. Influence of colored sands on canopy temperature and turf quality when applied to bermudagrass putting greens in Florida during winter months. (2015-2017). \$31,080.

Publications:

Shaddox**, T.W., J. B. Unruh, L. E. Trenholm, P. McGroary, and J. L. Cisar. 2015. Nitrogen rate required for acceptable St. Augustinegrass and associated nitrate leaching. *Crop Sci.* *In press*. doi: 10.2135/cropsci2015.04.0226

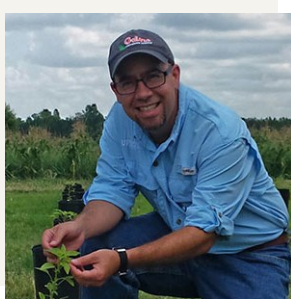
Glenn, B.D., B. J. Brecke, J. B. Unruh, J. A. Ferrell, K. E. Kenworthy, and G. E. MacDonald. 2015. Evaluation of alternative herbicides for southern crabgrass (*Digitaria ciliaris*) control in St. Augustinegrass. *Weed Tech.* 29(3):536-543.

Telenko**, D. E. P., T. W. Shaddox**, J. B. Unruh, and L. E. Trenholm. 2015. Nitrate leaching, turf quality, and growth rate of 'Floritam' St. Augustinegrass and common centipedegrass. *Crop Sci.* 55(3):1320-1328. doi: 10.2135/cropsci2014.09.0639

Zhang*, J., J. B. Unruh, and K. Kenworthy. 2015. Turf performance of bahiagrass, centipedegrass, and St. Augustinegrass cultivars under a linear gradient irrigation system. *Hort. Sci.* 50(3):1-5.

*Graduate Student

**Post-doctoral Research Associate



Dr. Ramon Leon

Publications:

Soni N, Leon RG, Erickson JE, Ferrell JA, Silveira ML (2015) Bio-char decreases atrazine and pendimethalin preemergence herbicidal activity. *Weed Technology.* 29:359-366

(Continued on page 6)

IN THIS ISSUE

[From the Director](#) 1

[Employee Happenings](#) 3

[NRC Student Named
CALS Ambassador](#) 3

[WFREC Employee
Receives Scholarship](#) 4

[New Grants and
Publications](#) 5

[2015 New Fall Students](#) 9

[New Graduate Student](#) 10

[Recruiter's Corner](#) 10

[Fall Harvest Dinner](#) 11

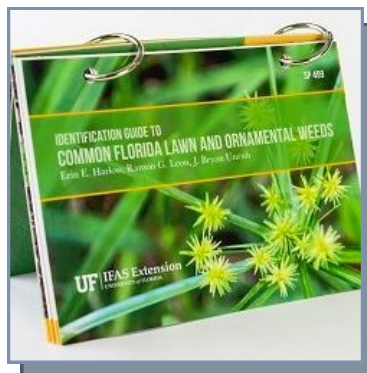
[Farm to City](#) 12

Leon RG, Izquierdo J, González-Andújar JL (2015) Characterization and modelling of itchgrass (*Rottboellia cochinchinensis*) biphasic seedling emergence patterns in the tropics. *Weed Science*. 63:623-630

Leon RG, Tillman BL (2015) Postemergence herbicide tolerance variation in peanut germplasm. *Weed Science*. 63:546-554

Dr. J. Bryan Unruh and Dr. Ramon Leon have also collaborated together to publish this pocket-sized Gardening, Lawn, and Landscape guide. It includes information on identifying 21 species of grass, sedge and broadleaf weeds commonly found in Florida yards and landscapes. It also includes general information about weed types, life cycles and herbicides.

You can purchase a copy through the UF/IFAS Extension Bookstore by clicking [here](#).



Dr. Mike Mulvaney

Grants:

Mulvaney, MJ. PI. UF IFAS. Using Smart Irrigation in cotton: Can it save water and nitrogen? (2015) \$5000.

Mulvaney, MJ. Co-PI. UF IFAS. Removing the guesswork from irrigation: Using PeanutFARM and soil moisture sensors in the western Panhandle (2015-2016). \$8940.

Publications:

Mulvaney MJ, Dufault NS, Donahoe M. 2015. Season's first incidence of cotton *Corynespora* target spot confirmed in Santa Rosa County. *Panhandle AgNews*, July

(Continued on page 7)

Visit us online at
wfrec.ifas.ufl.edu

Find us on Facebook

University of Florida -
Milton Campus

University of Florida -
Jay Research Facility

IN THIS ISSUE

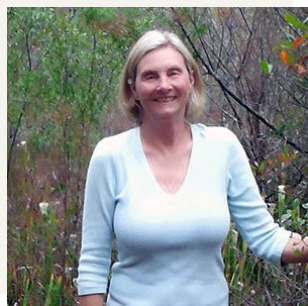
From the Director	1
Employee Happenings	3
NRC Student Named CALs Ambassador	3
WFREC Employee Receives Scholarship	4
New Grants and Publications	5
2015 New Fall Students	9
New Graduate Student	10
Recruiter's Corner	10
Fall Harvest Dinner	11
Farm to City	12

10, 2015. UF/IFAS Extension, University of Florida. <http://nwdistrict.ifas.ufl.edu/phag/2015/07/10/seasons-first-incidence-of-cotton-corynespora-target-spot-confirmed-in-santa-rosa-county/>

Mulvaney M. 2015. Manage potassium to control cotton stemphylium leafspot. Panhandle Ag News, June 5, 2015. UF/IFAS Extension, University of Florida. <http://nwdistrict.ifas.ufl.edu/phag/2015/06/05/manage-potassium-to-control-cotton-stemphylium-leafspot/>

Thetford M, Gillett-Kaufman JL, Mulvaney MJ. 2015. Olives for Your Florida Landscape. EDIS publication EP515. University of Florida, Gainesville, FL. <http://edis.ifas.ufl.edu/ep515>

Christie ME, Harman M, Mulvaney MJ. Gender and local soil knowledge: linking farmers' perceptions with soil fertility in the Philippines. Singapore Journal of Tropical Geology. In press. Accepted Apr. 21, 2015. Manuscript ID SJTG-14-020.R2.



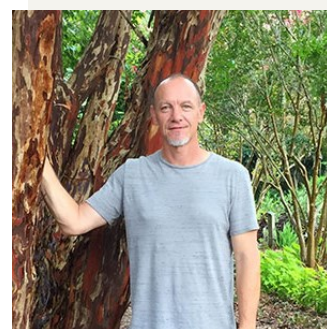
Dr. Deborah Miller

Grant:

Miller, D.L. PI. McStennis. Impacts of Feral Hog Foraging on Seepage Slope Wetlands. (2015-2016). \$ 43,600.

Publication:

Thetford M, Miller D.L., Atwood L.W. and Ballard B.O. Microsite and rooting depth are more important than water-holding gel for establishment of restoration plantings of *Ilex vomitoria* on barrier islands in the Gulf of Mexico. Native Plants Journal. 16 (2): 77-86.



Dr. Mack Thetford



Visit us online at
wfrec.ifas.ufl.edu

Find us on Facebook
University of Florida -
Milton Campus

University of Florida -
Jay Research Facility

(Continued on page 8)

IN THIS ISSUE

[From the Director](#) 1

[Employee Happenings](#) 3

[NRC Student Named
CALS Ambassador](#) 3

[WFREC Employee
Receives Scholarship](#) 4

[New Grants and
Publications](#) 5

[2015 New Fall Students](#) 9

[New Graduate Student](#) 10

[Recruiter's Corner](#) 10

[Fall Harvest Dinner](#) 11

[Farm to City](#) 12

(Continued from page 7)

Grant:

Bohn, K (PI), M. Thetford (co-PI), and G. MacDonald (co-PI). Florida Fish and Wildlife Conservation Commission.

Broad-scale herbicide applications to control Japanese climbing fern reproduction and growth across Florida's climatic zones. (2015-2016). \$31,750.



Dr. Kimberly Bohn

"For this research project we are documenting differences in Japanese climbing fern spore development and spore dispersal rates across three climatic zones of Florida. We will also implement preliminary studies to assess climbing fern control following different timings of herbicide treatments, applied from July through September."



Dr. Barry Brecke

Publication:

Glenn, B.D., B.J. Brecke, J.B. Unruh, J.A. Ferrell, K.E. Kenworthy and G.E. MacDonald. Evaluation of alternative herbicides for southern crabgrass (*Digitaria ciliaris*) control in St. Augustinegrass. Weed Tech:29:536-43

Publications:

Dillard, S. , Wood, C. , Wood, B. , Feng, Y. , Owsley, W. and Muntifering, R. (2015) Nitrogen Fertilization Impacts on Phosphorus Cycling in Grazed Grass-Legume Pasture. Agricultural Sciences, 6, 1115-1127. doi: 10.4236/as.2015.69107

Dillard SL, Wood CW, Wood BH, Feng Y, Owsley WF, Muntifering RB (2015) Effects of nitrogen fertilization on soil nutrient concentration and phosphatase activity and forage nutrient uptake from a grazed pasture system. Journal of Environmental Management 154:208-215



Dr. Wes Wood



Visit us online at
wfrec.ifas.ufl.edu

Find us on Facebook
University of Florida -
Milton Campus

University of Florida -
Jay Research Facility

Meet our Fall 2015 new students

IN THIS ISSUE

[From the Director](#) 1

[Employee Happenings](#) 3

[NRC Student Named
CALS Ambassador](#) 3

[WFREC Employee
Receives Scholarship](#) 4

[New Grants and
Publications](#) 5

[2015 New Fall Students](#) 9

[New Graduate Student](#) 10

[Recruiter's Corner](#) 10

[Fall Harvest Dinner](#) 11

[Farm to City](#) 12



Visit us online at
wfrec.ifas.ufl.edu

Find us on Facebook
University of Florida -
Milton Campus

University of Florida -
Jay Research Facility



Natural Resource Conservation

Emily Bagby
Jessica Baldwin
Nicholas Barys
Jacob Burkins
Brian Francis
Savanah Hamlin
Vera McHatton
Ashlynn Smith
Tiffani Vincent
David Whitfield
Brian Schumann

Wildlife Ecology

Ashley Panici

Plant Science/ Environmental Horticulture

Kaleb Lewis
Gina Mangold
Steven Wagner
Lydia Ann Weaver

Welcome to the University of Florida!

IN THIS ISSUE

[From the Director](#) 1

[Employee Happenings](#) 3

[NRC Student Named
CALs Ambassador](#) 3

[WFREC Employee
Receives Scholarship](#) 4

[New Grants and
Publications](#) 5

[2015 New Fall Students](#) 9

[New Graduate Student](#) 10

[Recruiter's Corner](#) 10

[Fall Harvest Dinner](#) 11

[Farm to City](#) 12



Visit us online at
wfrec.ifas.ufl.edu

Find us on Facebook
University of Florida -
Milton Campus

University of Florida -
Jay Research Facility

WFREC Welcomes a New Graduate Student

My name is Krystel Pierre, and I am an Agronomy graduate student with a concentration in Agroecology working under Dr. Mulvaney. I obtained my BS in Environmental Science with a concentration in Agriculture from Goshen College in December of 2013. From there I did a yearlong internship with World Hunger Relief, Inc. as a produce intern learning about what it takes to be a farmer in a third world country.



Now I'm starting my research at UF on trying to determine a peanut maturity prediction tool. I'm learning a lot about peanut production in the process. My hobbies are learning guitar, reading, outdoor activities, games and learning. I love new experiences and am enjoying my time at UF so far.

Recruiter's Corner

by Sondra Forrester



"I have thoroughly enjoyed my first four months as the academic program recruiter. Thank you to everyone at the WFREC for welcoming me with open arms. Working with students throughout the summer and seeing them start classes this Fall was truly rewarding. I'm looking forward to watching this program grow and knowing that I had a part in that success."

Here are some upcoming important academic dates:

CALS Leadership Institute Applications Due.....October 20
UF Homecoming.....November 6 -7
Veteran's Day Holiday.....November 11
Withdrawal Deadline.....November 23
Thanksgiving Holiday.....November 25 - 28
Final Exams.....December 12, 14-18
Spring 2016 Classes Begin.....January 5
CALS Career Expo-Gainesville.....February 4

IN THIS ISSUE

[From the Director](#) 1

[Employee Happenings](#) 3

[NRC Student Named
CALS Ambassador](#) 3

[WFREC Employee
Receives Scholarship](#) 4

[New Grants and
Publications](#) 5

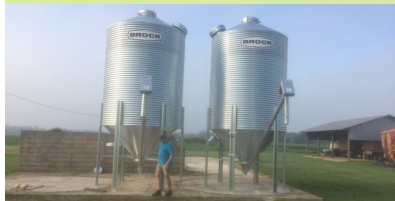
[2015 New Fall Students](#) 9

[New Graduate Student](#) 10

[Recruiter's Corner](#) 10

[Fall Harvest Dinner](#) 11

[Farm to City](#) 12



Visit us online at
wfrec.ifas.ufl.edu

Find us on Facebook
**University of Florida -
Milton Campus**

**University of Florida -
Jay Research Facility**

Fundraiser

UF/IFAS

West Florida Research and Education Center

FALL HARVEST DINNER

Friday,
November
13, 6-9PM.

UF|IFAS
UNIVERSITY of FLORIDA



WHERE

UF/IFAS West Florida Research & Education Center
4253 Experiment Road, Hwy 182, Jay, FL 32565

COST

\$50 | per person (tax deductible)

REGISTRATION

Online <http://www.eventbrite.com/e/2015-fall-harvest-dinner-tickets-18415786112>

Phone **850-983-7134**

RAFFLE (tickets \$5.00 per item):

- Yeti Tundra 65-quart cooler w/ tumblers & koozies
- XT250B John Deere string trimmer
- Remington 11-87 Sportsman autoloading shotgun

To purchase raffle tickets prior to the event, please contact Robin Vickers at 850-983-7134. You do not have to be present to win.

Please mark your calendar and make plans to join us for a night on the farm.



Entertainment by
**family-friendly
comedian and
storyteller
Lee McBride.**

This is not a black tie affair. The attire is country casual (blue jeans and boots).

Proceeds from this event will be used to convert an existing equipment building at the Jay Research and Education Center into a conference facility for faculty, students and the public.



IN THIS ISSUE

[From the Director](#) 1

[Employee Happenings](#) 3

[NRC Student Named
CALS Ambassador](#) 3

[WFREC Employee
Receives Scholarship](#) 4

[New Grants and
Publications](#) 5

[2015 New Fall Students](#) 9

[New Graduate Student](#) 10

[Recruiter's Corner](#) 10

[Fall Harvest Dinner](#) 11

[Farm to City](#) 12



Ag students from Santa Rosa and Escambia schools helped harvest cabbage and collards in 2014

The University of Florida - West Florida Research and Education Center, Bay Area Food Bank, Waterfront Rescue Mission and the Guy Thompson Community Center will join forces to celebrate National Farm to City Week November 20-26, 2015. Farm to City Week is a national effort with the goal to bring about a better understanding between rural and urban people by increasing their knowledge and appreciation for agriculture. We know that you support agriculture and we are asking for your support of our local efforts to promote agriculture during the Farm to City Week.

To promote agriculture and increase awareness about the importance of agriculture to consumers and the general public, we will distribute food (some locally grown) to 400 pre-qualified families in need in Santa Rosa County and 300 families in need in Escambia County. This food will provide these families with a healthy meal this Thanksgiving holiday.

We would like you to consider supporting this community outreach project. There are several ways that you can help us take care of our own in need this holiday season. We are asking for monetary donations at the following levels: *Platinum level of \$500.00 *Gold level of \$300.00 *Silver level of \$200.00 *Bronze level of \$100.00 or help by donating your time to come out and help distribute the holiday meal boxes.

To make a monetary contribution, please make checks payable to the **University of Florida** and mail to Robin Vickers at 5988 Hwy 90, Bldg. 4900, Milton, FL 32583. Want to be a volunteer? Email Robin Vickers at rvickers@ufl.edu or by calling 850-983-7134.

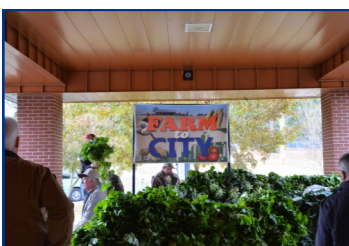
Thanks to all of our sponsors!



Visit us online at
wfrec.ifas.ufl.edu

Find us on Facebook
University of Florida -
Milton Campus

University of Florida -
Jay Research Facility



2014 food distribution at the Guy Thompson Community Center in Milton