

**Welcome to ENY3005L – Principles of Entomology LAB
Fall 2017**

Professor:

Silvana V. de Paula-Moraes

Offices:

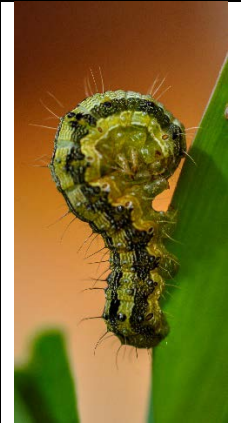
West Florida Research and Education Center/UF/IFAS
Room 11, 4253 Experiment Dr., Hwy 182, Jay, FL
and

Room 4926, 5988 Hwy. 90, Bldg. 4900, Milton, FL

e-mail: paula.moraes@ufl.edu

Office hours: 10:30 to 11:30am Monday at room 4926, Bldg. 4900,
5988 Hwy., Milton, FL., and by appointment.

Course TA: Latisa Ledbetter-Kish, lelkish@ufl.edu (copy Dr. Paula-Moraes). Her office hours will be announced in class.



Course goal

- Expose students to the insect diversity;
- Distinguish the major insect orders and be familiar with taxonomy terminology;
- Be familiar with different techniques of collection, preservation and taxonomic identification of insects.

Learning objectives

- Recognize by sight the major insects orders based on the insect body structure;
- Collect, mount and preserve different orders of insects;
- Arrange a professional insect collection.

Time and Locations:

Monday, 4:00 – 7:00 PM

Fall Semester: August 21, 2017 to December 11, 2017

West Florida REC Milton Campus, Room 4814 and West Florida REC Jay, FL. The location of each class will be scheduled in advance.

Textbook

Daly and Doyen's Introduction to Insect Biology and Diversity, Whitfield & Purcell, Third edition. Available at https://www.amazon.com/s/ref=nb_sb_noss?url=search-alias%3Daps&field-keywords=Doyens+introduction+insect+biology

Optional readings

Borror and DeLong's Introduction to the Study of Insects, Triplehorn & Johnson, Seventh edition.

A field Guide to the insects of North America North Mexico, Peterson Field Guides, Borror & White;

Photographic Atlas of Entomology and Guide to Insect Identification, Caster;

Other materials

Complementary material and other references will be provided during the semester.

Grading

Grading will follow University standards and a full explanation of UF grading policies can be found at <https://catalog.ufl.edu/ugrad/current/regulations/info/grades.aspx>.

The grading will be based on the following scale:

A	93-100
A-	90-92
B+	87-89
B	83-86
B-	80-82
C+	77-79
C	73-76
C-	70-72
D	60-69
E	<60

The student grades will be based on the following activities:

Activity	Points
3 quizzes - the lab quizzes will be given during the semester and the student will need to identify by sight the name of the insects orders based on the insect body structure. Some questions will be associated with the insect habitat and techniques used to collect, mount and preserve different orders.	30
Insect collection of different species with 50 adult specimens (no immatures) - collections that are not submitted by the due date will not be accepted. The student is required to have a collecting kit ¹ and assemble a professional insect collection. The insects should be dead, well and properly curated. The specimens must be pinned, spread properly (all Lepidoptera specimens) and labeled (location, collector's name; date). The collection should be submitted in a box that will be provided by the instructor. The insect collection will not be returned to the student.	50
Final Lab exam	20
Total points available	100

¹During the classes the student will use some of the supplies from the Entomology Lab and the box the student will house the collection will be provided by the instructor. However, a collecting kit is required to make an insect collection and should have net, jar, pinning block, etc. The source most entomologists use to buy their collection supplies is <http://www.bioquip.com> Feel free to shop around on your own and make sure you will have the collecting kit in the beginning of the semester so you can start to begin collecting and mounting the specimens.

Student responsibilities

- Attendance: is mandatory and students are expected to attend each class session, which will include lectures, discussion, lab and outdoor sessions. at West Florida Research Education Center Milton Campus, Room 4814 and at West Florida REC Jay, FL. Classes will be scheduled in advanced.
Additional information about class attendance at UF can be found at: <https://catalog.ufl.edu/ugrad/current/regulations/info/attendance.aspx>
- Exams: In the case the student are no able to take an exam there will not be make-up available unless you have a valid physician's note indicating reasons for the absence. More information can be found at: <https://catalog.ufl.edu/ugrad/current/regulations/info/attendance.aspx>.
- Laboratory conduct: closed-toed shoes are required for all class period. Food and beverages are not permitted in the laboratory. Electronic devices should not be used during the lab period unless specified by the professor or TA.
- Collecting equipment from Entomology Laboratory – collections will not be graded unless 100% of the collecting equipment is returned at the time designated.
- Legal requirements for insect collection – be aware that there are rules regulating collection and transportation of insects. Collection in state and national parks is illegal unless a research permit has been issued. Collection in private land is unregulated except for endangered species, but it is important ask permission from the landowner.

Class Schedule Fall 2018

This is a tentative Lab class schedule

Week	Class topic	Reading
1 – August 21, 2017	Course overview Introduction: Classification, taxonomy and nomenclature	Part 3 and complementary material
2 – August 28, 2017	Collecting, mounting and preserving insects Time capsule	Complementary material

3 – September 11, 2017	Collecting, mounting and preserving insects	Complementary material
4 – September 18, 2017	Collecting, mounting and preserving insects	Complementary material
5 – September 25, 2017	Collecting, mounting and preserving insects	Complementary material
6 – October 2, 2017	Lab quiz	-
7 – October 9, 2017	Order Lepidoptera	Part 3 and complementary material
8 – October 16, 2017	Order Hymenoptera	Part 3 and complementary material
9 – October 23, 2017	Order Coleoptera and Dermaptera	Part 3 and complementary material
10 – October 30, 2017	Order Hemiptera and Thysanoptera Lab quiz	Part 3 and complementary material
11 – November 6, 2017	Order Diptera, Siphonaptera, Phthiraptera	Part 3 and complementary material
12 – November 13, 2017	Order Neuroptera, Ephemeroptera, Odonata and Blattodea	Part 3 and complementary material
13 – November 20, 2017	Insect collection discussion (10% of insect trading among students will be allowed)	Part 3 and complementary material
14 – November 27, 2017	Orders Mantodea, Grylloblattodea, Mantophasmatodea and others Lab quiz	Part 3 and complementary material
15 – December 4, 2017	Insect collection	
16 – December 11, 2017	Final exam	

Course evaluation

Online Course Evaluation Process Student assessment of instruction is an important part of efforts to improve teaching and learning. At the end of the semester, students will have the opportunity to provide feedback on the quality of instruction in this course using a standard set of university and college criteria. These evaluations are conducted online at GatorRator. Evaluations are typically open for students to complete during the last two or three weeks of the semester; students will be notified of the specific times when they are open. It is expected that you will contribute your feedback for this course and the others in which you are enrolled this term. Summary results of these assessments are available to students at GatorRator.

On-line Resources:

An e-learning site for this course is available through CANVAS. This provides a format to share documents and discussions with your classmates. This syllabus and general announcements from the instructors to students will also be posted. IT IS YOUR RESPONSIBILITY TO CHECK CANVAS AND USE THIS RESOURCE TO STAY UP-TO-DATE WITH SCHEDULES AND CLASSWORK. The CANVAS app is free.
Software Use

All faculty, staff and students of the university are required and expected to obey the laws and legal agreements governing software use. Failure to do so can lead to monetary damages and/or criminal penalties for the individual violator. Because such violations are also against university policies and rules, disciplinary action will be taken as appropriate.

Campus Helping Resources

Students experiencing crises or personal problems that interfere with their general wellbeing are encouraged to utilize the university's counseling resources. The UF Counseling and Wellness Center provides confidential counseling services at no cost for currently enrolled students. Resources are available on campus for students having personal problems or lacking clear career or academic goals, which interfere with their academic performance. The Center is located at 3190 Radio Road.

- Career Resource Center, CR-100 JWRU, 392-1601,
- Student Health Care Center, 392-1161, www.crc.ufl.edu/
- University Counseling & Wellness Center, 352-392-1575, <http://shcc.ufl.edu/http://www.counseling.ufl.edu/cwc/>

Students with Disabilities

Services for Students with Disabilities: The Disability Resource Center coordinates the needed accommodations of students with disabilities. This includes registering disabilities, recommending academic accommodations within the classroom, accessing special adaptive computer equipment, providing interpretation services and mediating faculty-student disability related issues. Students requesting classroom accommodation must first register with the Dean of Students Office. The Dean of Students Office will provide documentation to the student who must then provide this documentation to the Instructor when requesting accommodation. 0001 Reid Hall, 352-392-8565, www.dso.ufl.edu/drc/

Academic Honesty

As a student at the University of Florida, you have committed yourself to uphold the Honor Code, which includes the following pledge: "We, the members of the University

of Florida community, pledge to hold ourselves and our peers to the highest standards of honesty and integrity.” You are expected to exhibit behavior consistent with this commitment to the UF academic community, and on all work submitted for credit at the University of Florida, the following pledge is either required or implied: "On my honor, I have neither given nor received unauthorized aid in doing this assignment."

It is assumed that you will complete all work independently in each course unless the instructor provides explicit permission for you to collaborate on course tasks (e.g. assignments, papers, quizzes, exams). Furthermore, as part of your obligation to uphold the Honor Code, you should report any condition that facilitates academic misconduct to appropriate personnel. It is your individual responsibility to know and comply with all university policies and procedures regarding academic integrity and the Student Honor Code. Violations of the Honor Code at the University of Florida will not be tolerated. Violations will be reported to the Dean of Students Office for consideration of disciplinary action.

For more information regarding the Student Honor Code, please see:

<http://www.dso.ufl.edu/SCCR/honorcodes/honorcode.php>. Copying, screen printing, photographing, or viewing another students exam materials is a violation of the UF Honor Code.

Plagiarism in this class will not be tolerated. For more information about plagiarism, please see http://www.uflib.ufl.edu/msl/subjects/images/plagiarism_26_guidelines.pdf . You may also wish to read <http://nursing.ufl.edu/?s=plagiarism> . All work submitted must be in your own words and proper citations must be given for sources of ideas.

All graded coursework must be completed independently. Sharing of exam or quiz information will be considered academic dishonesty and a failing grade will be assigned. All students, those giving and receiving information will be referred to the Dean of Students for Academic Dishonesty.

Student Complaints

The University of Florida believes strongly in the ability of students to express concerns regarding their experiences at the University. The University encourages its students who wish to file a written complaint to submit that complaint directly to the department that manages that policy.

Residential Course: https://www.dso.ufl.edu/documents/UF_Complaints_policy.pdf

Online Course: <http://www.distance.ufl.edu/student-complaint-process>